

# EHOX

Innovate To Protect





# Table of Content

<b>Innovation with a Purpose: Protecting Lives</b>	<b>4</b>
<b>The current landscape of fire detection</b>	<b>6</b>
Technical Complexity	6
Regulatory and Operational Requirements	7
<b>Our Philosophy</b>	<b>8</b>
Vision	8
Mission	9
Values	9
<b>The pillars of EHOX solutions</b>	<b>10</b>
Agile Configuration and Commissioning	10
External Communication	10
Smart Internal Communication	11
DM SENSOR®	14
Technology	14
NUSKU®	14
Smart Services Platform	14

# Innovation with a Purpose: Protecting Lives

EHOX was founded in direct response to a growing market need: the demand for fire detection systems capable of going beyond current solutions. Our goal is to provide a faster, more accurate, and more effective response to situations that put at risk:



People's lives



Property

The evolution of construction environments, new materials and production processes, as well as the growing complexity of today's infrastructure, demand smarter and more reliable detection solutions.

In this context, EHOX positions itself as a brand that combines the most advanced communications technology with intelligent data analysis systems, enabling early and accurate interpretation of fire indicators.

Thanks to this technological integration, EHOX systems provide:

- ✓ More agile and informed decision-making.
- ✓ Shorter response times.
- ✓ More effective emergency response.





## Fire detection driven by machine learning, precision, and anticipation.



The result is:

- ✔ **Superior protection for people:**  
Minimizes the risks associated with fire, ensuring your safety at all times.
- ✔ **Effective protection of property:**  
Reduces property damage and protects critical facilities from fire.
- ✔ **Operational continuity of facilities:**  
Helps maintain uninterrupted operations, even during emergencies.

EHOX thus represents a new approach to fire detection, based on innovation, reliability, and a commitment to safety, offering solutions designed to anticipate risk and act when it matters most.

# The current landscape of fire detection

Fire detection today faces an increasingly complex and demanding environment. Changes in building construction, the emergence of new materials, and the diversification of building uses have significantly altered the nature of fire-related risks.

Modern infrastructures require solutions capable of adapting to new technical, regulatory, and operational conditions, where early, reliable, and accurate detection is critical to ensuring the safety of people and the continuity of operations.



## Technical Complexity

Modern infrastructure incorporates:

- ✓ More advanced technical systems.
- ✓ Higher occupancy densities.
- ✓ Production processes with specific characteristics.

As a result, detection systems must be capable of adapting to variable environmental conditions and to risk situations that differ greatly from one another.

# Regulatory and Operational Requirements

Current regulations require not only compliance with technical requirements but also the proper integration of detection systems into comprehensive safety, evacuation, and fire protection strategies.

For many organizations, business continuity is a critical factor.

Ineffective detection or a delayed response to a fire can lead to serious consequences:



Human



Economic



Operational

Fire detection is no longer an isolated element but has become a key component of overall **risk management**.

Today's solutions must provide:

- ✓ Reliable information for advanced decision-making.
- ✓ Reduction of uncertainties.
- ✓ A rapid and coordinated response.



# Our Philosophy

At EHOX, we are redefining the standard for **proactive safety**. We combine decades of technical expertise with a disruptive vision to lead the way in smart fire protection. We develop cutting-edge engineering designed to address the challenges of the most critical environments, guided by an unwavering principle: **when it comes to protection, there are no compromises.**

Our identity is reflected in the development of solutions focused on reliability and rapid response, integrating advanced data analysis to interpret environmental signals. We understand that early and accurate detection is crucial to minimizing the consequences of a fire and acting effectively in situations of real risk.



## Vision

To establish ourselves as the global leader in proactive fire safety.





## Mission

To facilitate safer emergency management to protect what matters most.



### Protection of people

To facilitate early evacuation and agile, safe emergency management.



### Protection of property

To ensure business continuity, minimizing the economic and operational impact of a fire.



## Values

- **Operational Reliability:** We guarantee continuous and stable operation, even in demanding environments, ensuring an appropriate response when intervention is necessary.
- **Intelligent Analysis:** We integrate advanced communication and data analysis technologies to intelligently interpret environmental signals.
- **Accuracy and Effectiveness:** We design solutions focused on rapid response and reducing false alarms, which are critical to minimizing the consequences of a fire.

# The pillars of EHOX solutions

EHOX detection systems are designed to deliver a high level of operational efficiency throughout their entire lifecycle: from installation and commissioning to system management and maintenance. This approach is based on the integration of advanced technology, data analysis, and intelligent predictive systems, enabling maximum reliability in the early detection of risks and enhancing security in strategic sectors such as residential, commercial, healthcare, logistics, and transportation.

EHOX solutions are built on the following pillars:



## Agile Configuration and Commissioning

All systems include tools specifically developed to control, configure, and monitor the installation—whether during an upgrade of an existing system or from the very beginning—enabling a streamlined, intuitive, and highly efficient process.

This design philosophy allows for:

- ✓ Reduced installation times
- ✓ Minimized errors
- ✓ Easier verification of the system before it goes live.



## External Communication

All panels—including the LX and BX algorithmic detection models, the ZX hybrid detection model, the JN analog gas detection model, and the CX conventional detection model—come standard with:

- ✓ **A standard USB port**, which simplifies configuration, maintenance, and diagnostic tasks.
- ✓ **Ethernet communication and Wi-Fi connectivity**, offering flexibility for integration into various network infrastructures.
- ✓ **Optional 4G communication (data or voice and data)**, expanding the possibilities for remote monitoring and management in facilities where a wired network is not available.



## Smart Internal Communication

At EHOX, not only is external communication a priority, but so is internal interaction between systems and their field devices. To ensure efficient and reliable connectivity throughout the entire facility, the **ZX Series** systems incorporate the EH-SYNC® network.



### EH-SYNC® Hybrid Network

Based on a new hybrid detection concept, EH-SYNC® allows different types of fire and gas detection systems and technologies to be integrated into a single network without the need for additional cards or hardware.

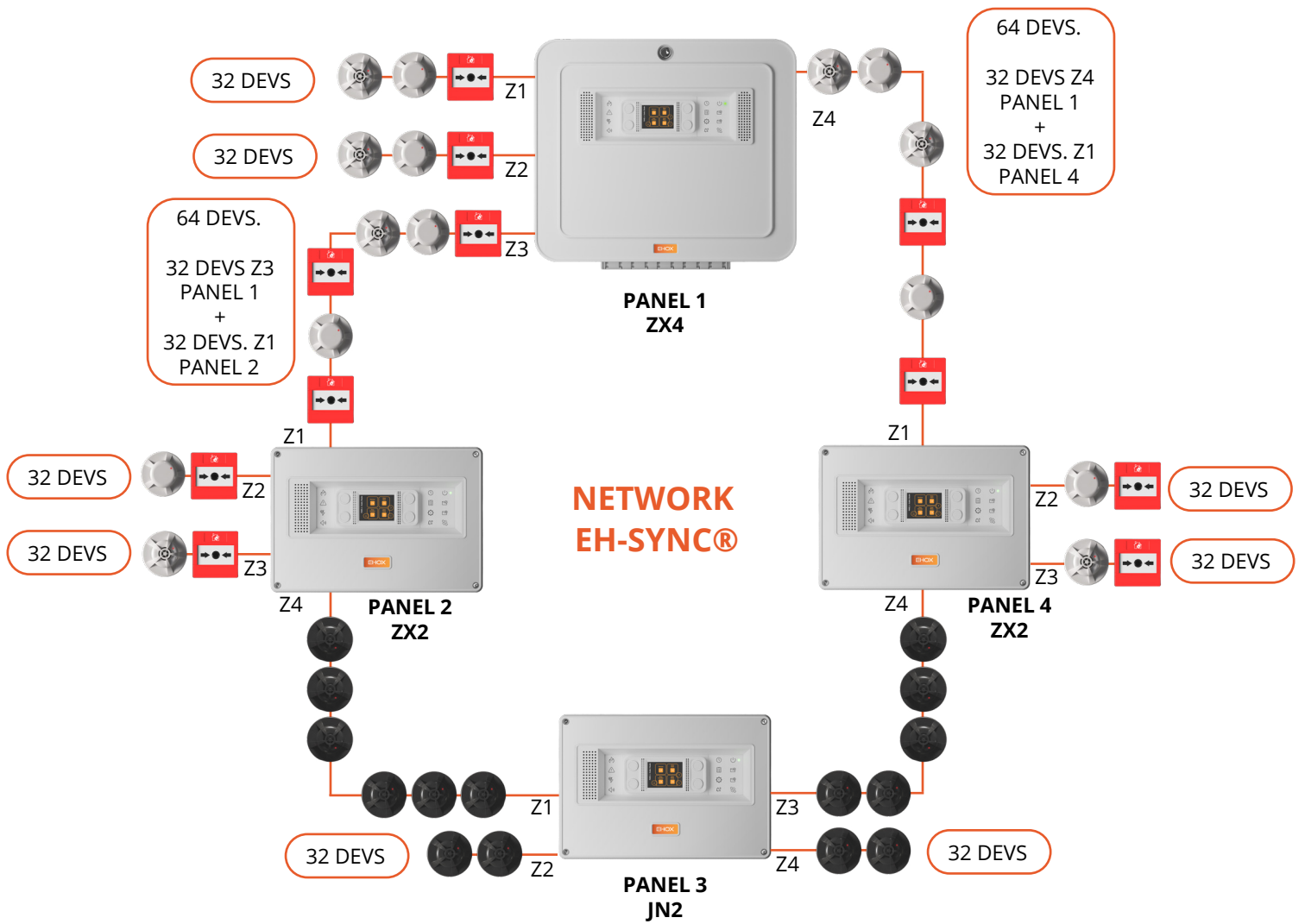
One of its main benefits is particularly evident in renovation or expansion projects, where the infrastructure is already in place.

La arquitectura EH-SYNC® hace posible:

- ✓ Upgrade existing systems with the latest technology.
- ✓ Avoid structural modifications to the facility.
- ✓ Reduce execution times.
- ✓ Lower maintenance costs.
- ✓ Minimize operational procedures.

The ZX series and the EH-SYNC® network represent the natural evolution of EHOX fire detection systems, resulting from the application of advanced technology designed to improve operational efficiency and reliability.

EH-SYNC® embodies EHOX's innovation in fire protection, offering a smarter and more efficient way to advance fire detection systems.



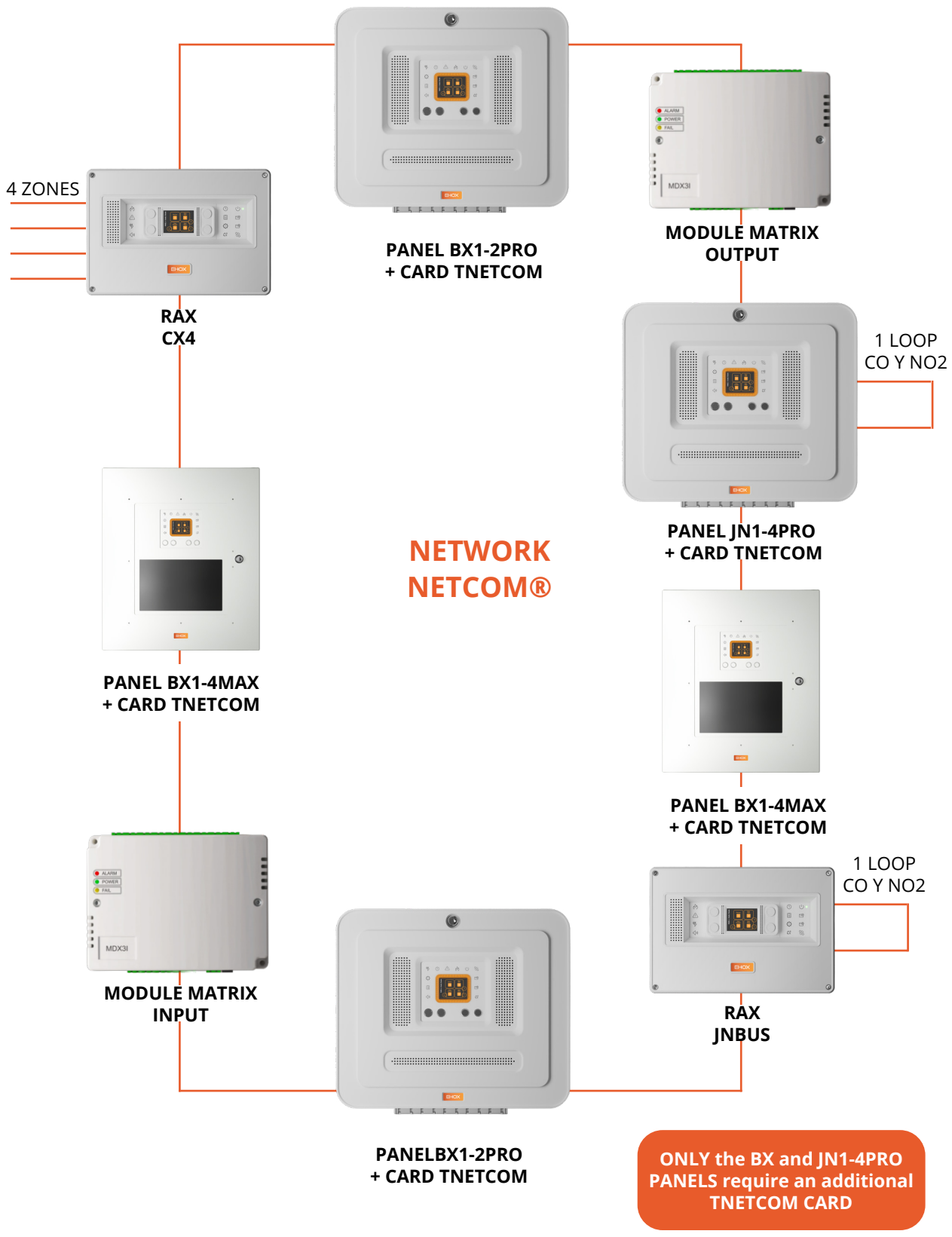
### NETCOM® Network

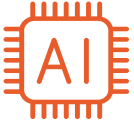
The NETCOM® network was developed in response to the need to combine efficiency with simplicity, specifically for the **algorithmic panels of the BX and JN series**.

The NETCOM® Network allows you to:

- ✓ Integrate algorithmic detection panels.
- ✓ Integrate analog gas detection panels.
- ✓ Connect RAX panels and MATRIX multimodules.

This integration capability simplifies the system architecture, reduces installation complexity, and provides unified management of the various detection subsystems.





### DM SENSOR® Technology

EHOX's **algorithmic detectors** incorporate DM SENSOR®, a next-generation solution developed using Artificial Intelligence (AI), designed to offer the highest level of reliability, accuracy, and adaptability in early fire detection.

Key features of algorithmic detectors with DM SENSOR®:

- ✔ Advanced and dynamic analysis of captured signals.
- ✔ Local data storage for the 5 minutes prior to an alarm.
- ✔ Detailed historical record of the event's progression.
- ✔ Enhanced validation of each alarm.

All EHOX DM SENSOR® algorithmic detectors are compatible with the EHOX ZX, LX, and BX control panel series.



### NUSKU® Smart Services Platform

EHOX **algorithmic detectors** continuously interact with the NUSKU® platform, which analyzes data received from multiple locations and real-world scenarios. This collaborative intelligence enables more accurate and reliable detection, reducing false alarms and improving the system's ability to identify genuine alarms.

Key features of NUSKU® platform:

- ✔ Compare the data from each detector with evolution curves and models for different types of fires.
- ✔ Continuously optimize the system's ability to identify genuine alarms.
- ✔ Minimize the false alarm rate, thereby increasing reliability.
- ✔ Adapt the system's learning to new environmental conditions, applications, and fire behaviors.



Innovate to Protect



[www.ehox.es](http://www.ehox.es)